

TurningPoint– PowerPoint Polling for PC Before Class

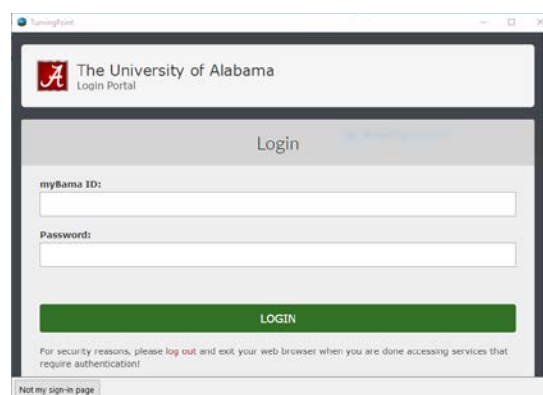
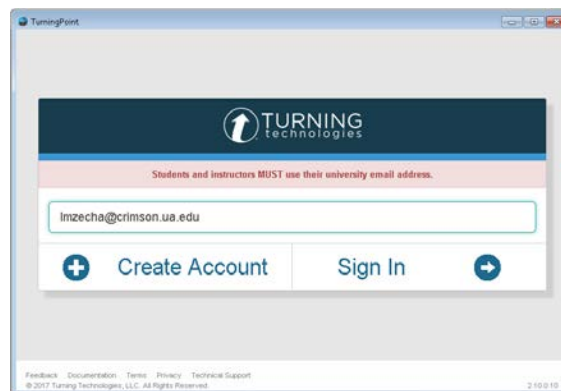
The TurningPoint PowerPoint Polling clicker system allows instructors to ask questions within PowerPoint on a PC and receive student clicker responses. This tutorial will guide you through using PowerPoint Polling after TurningPoint Cloud has been installed on your computer.

Begin by opening the TurningPoint application software.

***Note:** If this is the first time you've opened the TurningPoint software, you will have to select North/South America. Click **Connect**.



Enter your myBama email address and click **Sign In**. On the next screen, enter your myBama username and password and click **Login**.

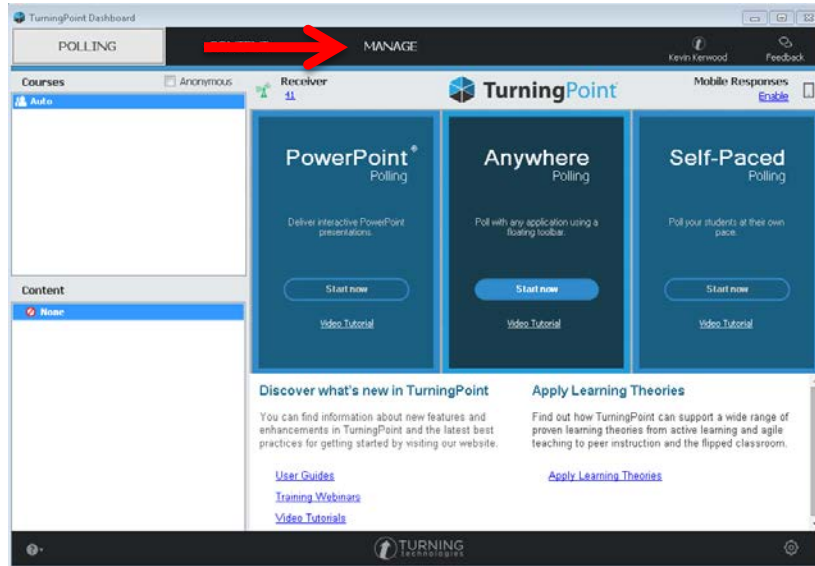


Downloading Your Course

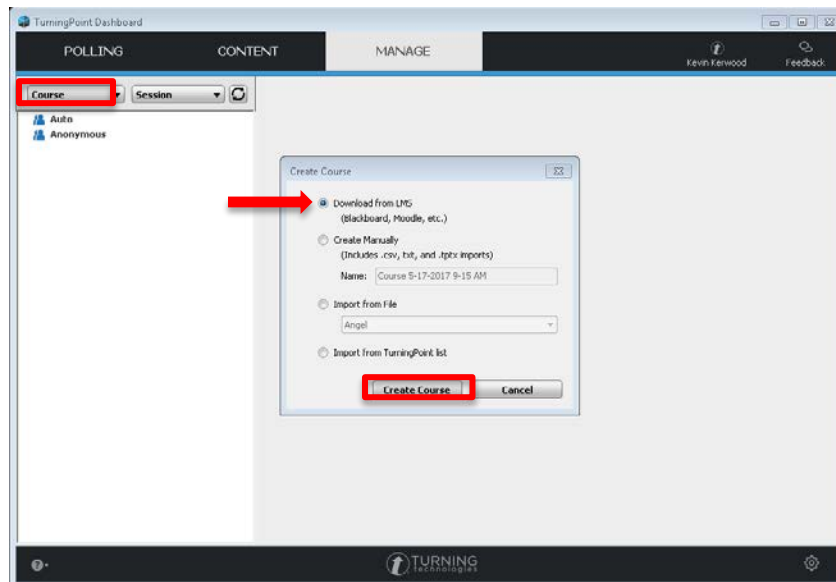


TurningPoint

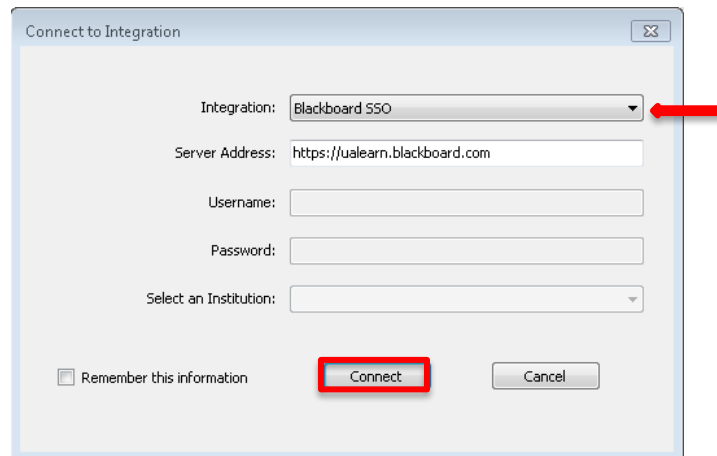
1. Begin by opening the TurningPoint application.
2. From the TurningPoint Dashboard, navigate to the **Manage** tab.



3. Select **Course > New**. Select **Download from LMS** and click **Create List**.



- Next, select Blackboard SSO from the Integration drop-down menu. Enter in the Blackboard server address as <https://ualearn.blackboard.com>. You must include the “s” in https for the server address.



Connect to Integration

Integration: Blackboard SSO

Server Address: https://ualearn.blackboard.com

Username:

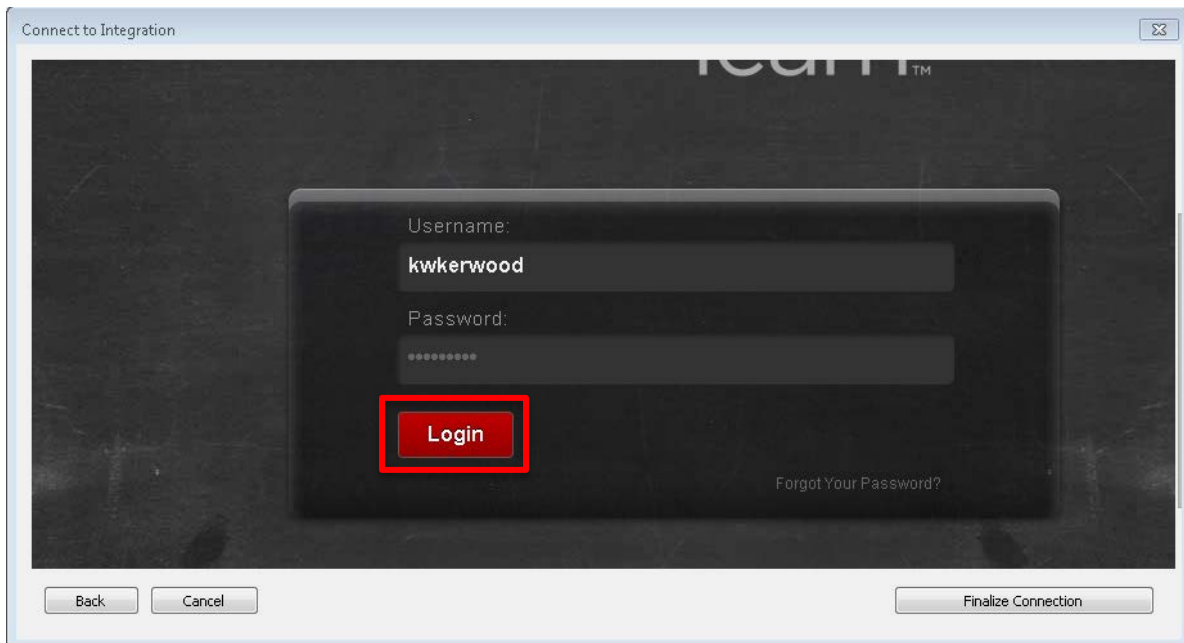
Password:

Select an Institution:

Remember this information

Connect Cancel

- Enter your MyBama credentials and hit enter or click login.



Connect to Integration

Username: kwkerwood

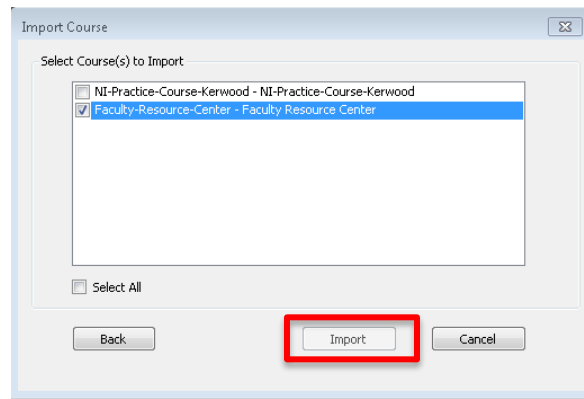
Password:

Login

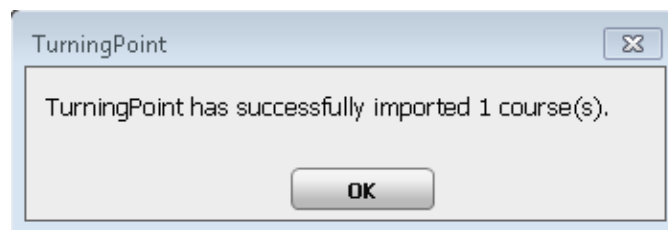
Forgot Your Password?

Back Cancel Finalize Connection

6. Select the course(s) you would like to import, then click **Import**.

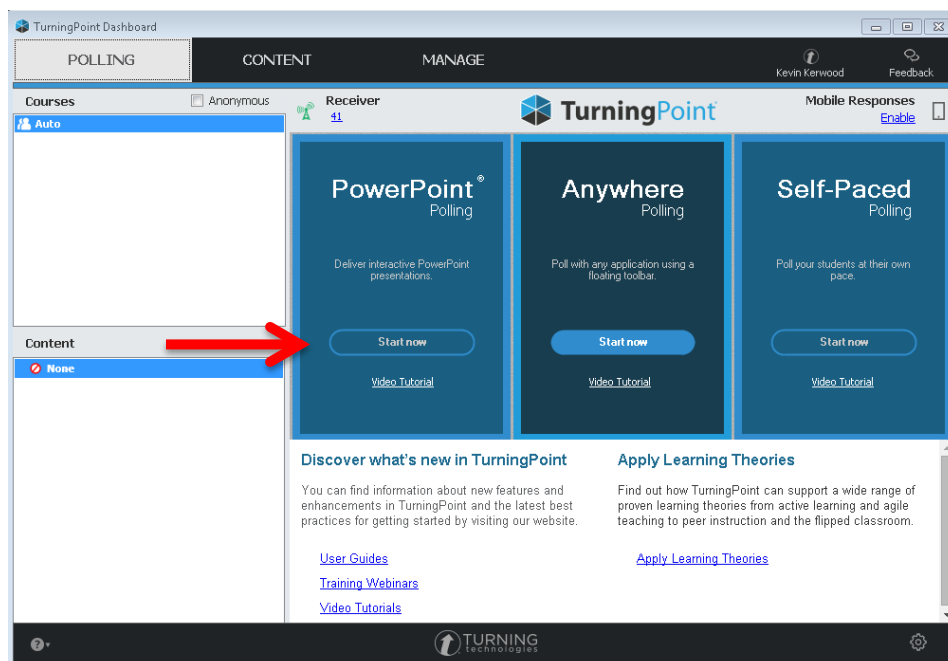


7. A confirmation window will confirm the number of courses downloaded. **NOTE:** You will only have to import a course once.

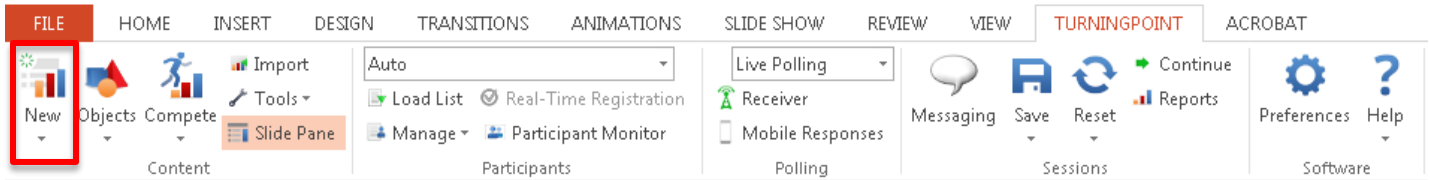


Creating Content

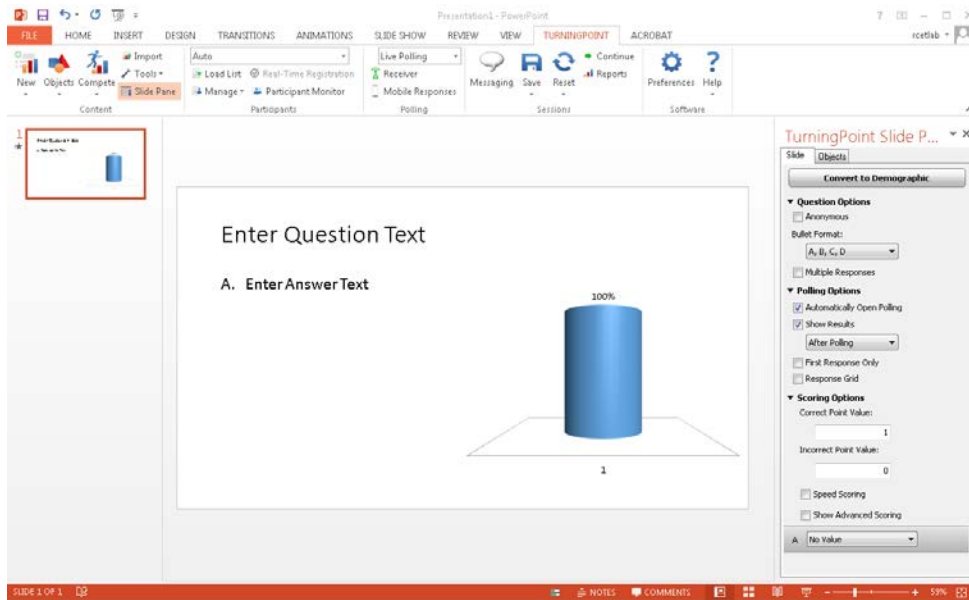
1. Open the TurningPoint dashboard. Click **PowerPoint Polling**. This will open a blank PowerPoint presentation with a TurningPoint tab.



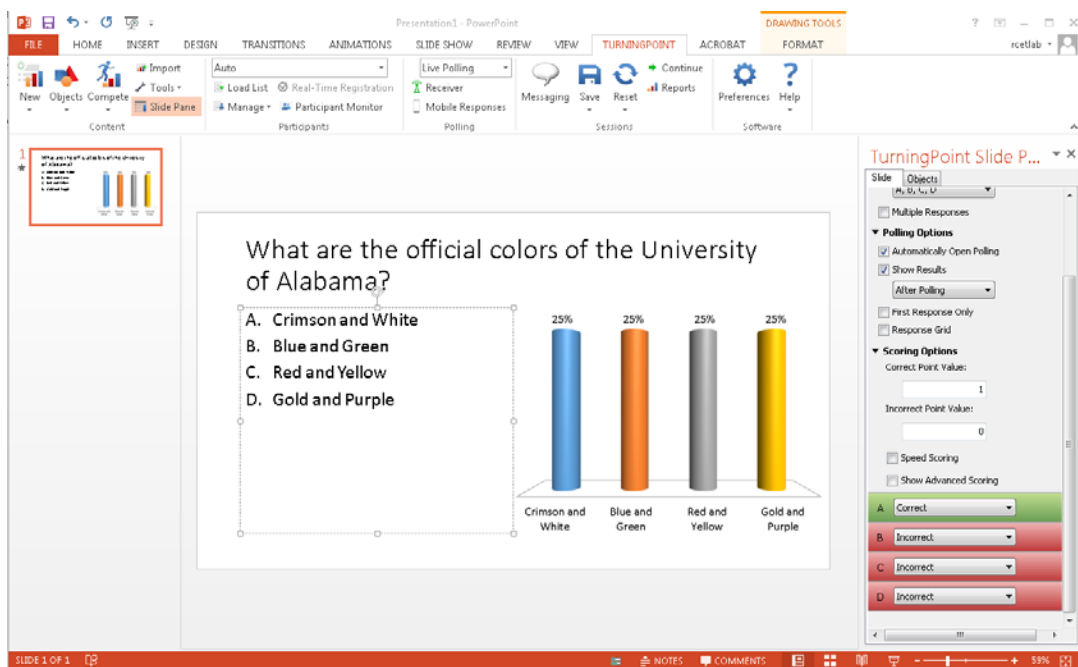
2. To create a polling slide, click **New** in the TurningPoint toolbar and select a question type.



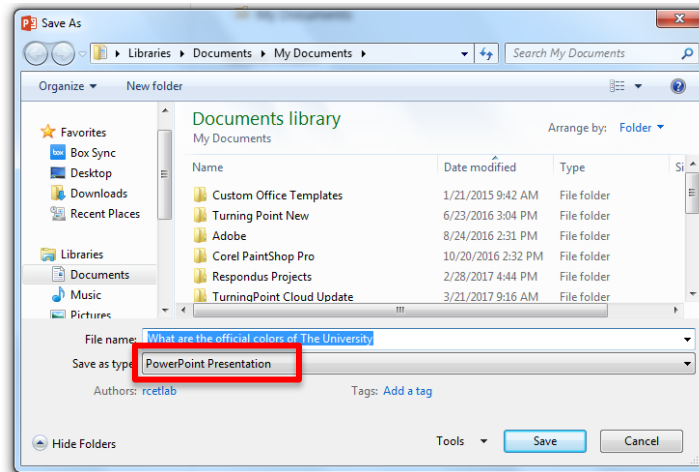
3. When the new polling slide appears, enter question and answer text into the relevant boxes.



4. At the bottom of the **Slide Preferences** sidebar, under the **Scoring Options** header, enter the desired answer values and select correct answer choices.



- Repeat steps 2-5 for each polling question.
- Once you have finished adding polling slides, save the presentation as a PowerPoint Presentation type.



- Quit PowerPoint to return to the TurningPoint Dashboard.

For more information, contact the Faculty Resource Center at 205.348.3532
or frc@ua.edu
or visit our website at <http://frc.ua.edu>.

Last updated 20 August 2018